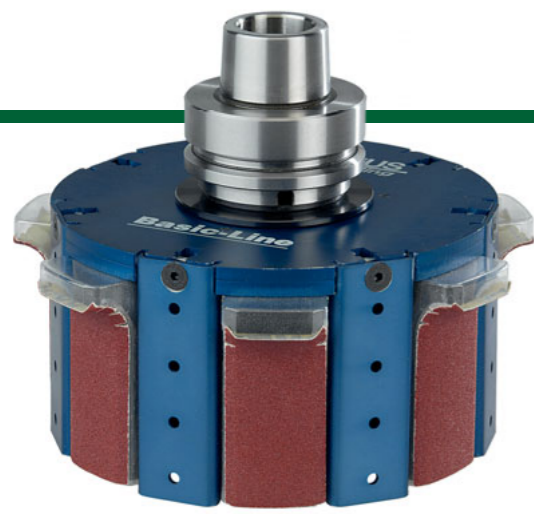
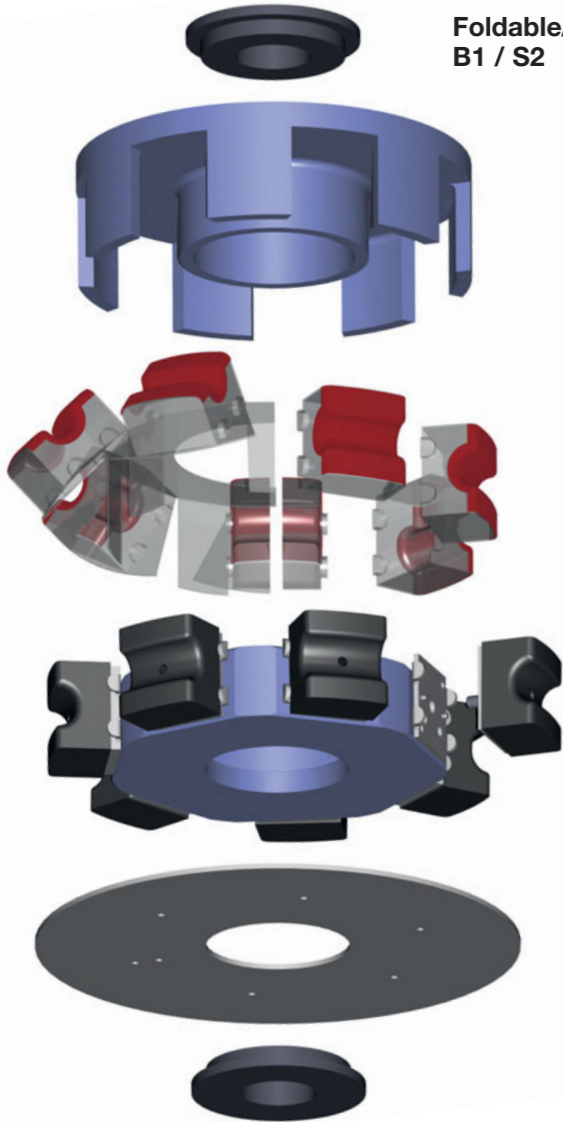


Das Beste für Profile Fräsen und Schleifen Numéro un pour les profilés Fraiser et Poncer Il numero uno per profili Fresare e Levigare The best for profiles Cutting and Sanding



Foldable/Segment
B1 / S2



Visit our website on:
www.arminius tooling.com

For using HSK 63 Monoblock or
profiled Solido S1, please order a
copy of our UNI-Line brochure



Flexible
profile sanding tool

ARMINIUS BASIC-Line

for optional
combination of
3 base and
3 abrasive qualities
for every price
and performance
requirement

ARMINIUS Tooling Inc.
P.O. Box 68
FORESTON, MN 56330

tel. +1 32 02 94 59 00
fax +1 32 02 94 59 02

e-mail : info@ArminiusTooling.com
Internet : www.ArminiusTooling.com

ARMINIUS-Schleifmittel GmbH
Postfach 6024 · D-32732 Detmold

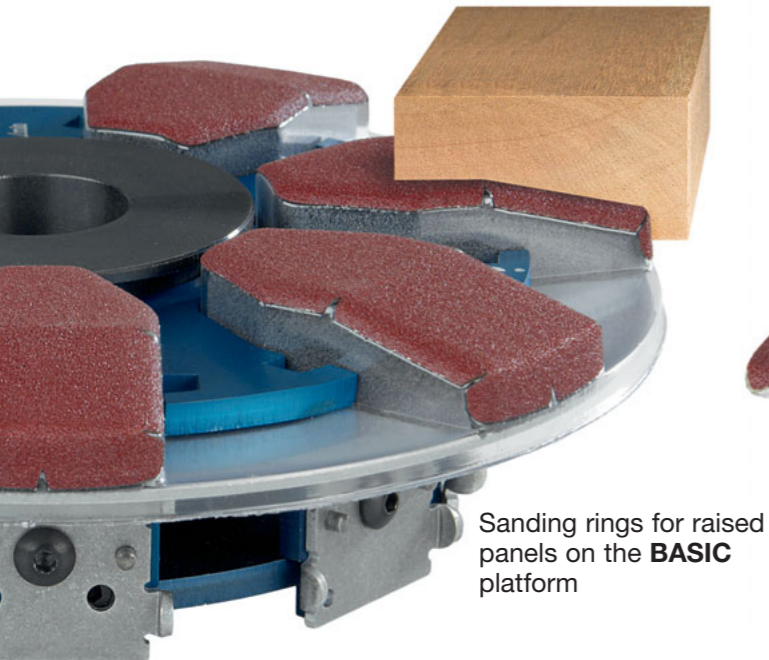
Tel. 05 23 1 / 94 55 0
Fax 05 23 1 / 94 55 99
Sales: 05 23 1 / 94 55 13

E-Mail: info@arminius.de
Internet: www.arminius.de

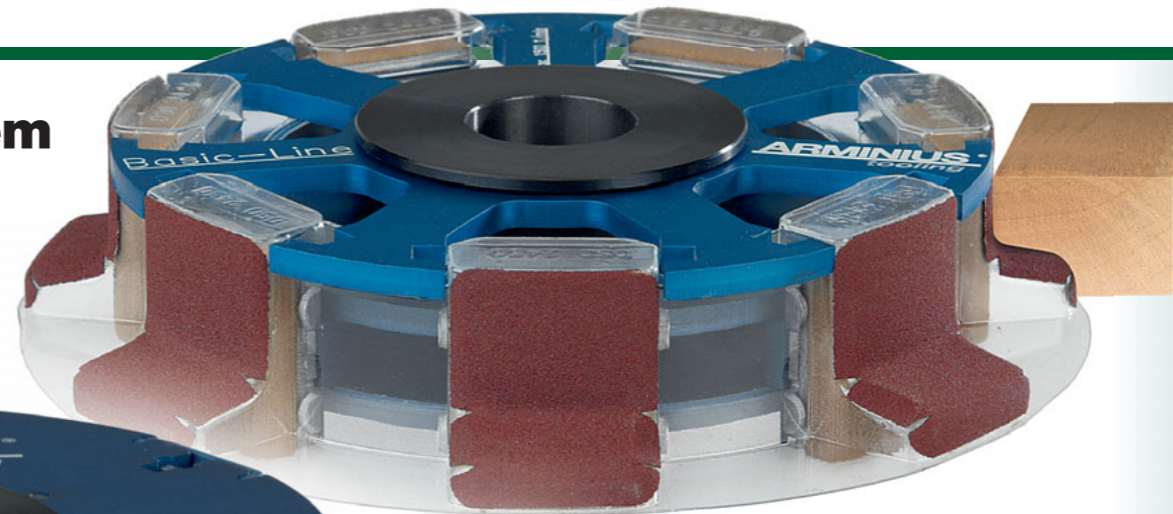
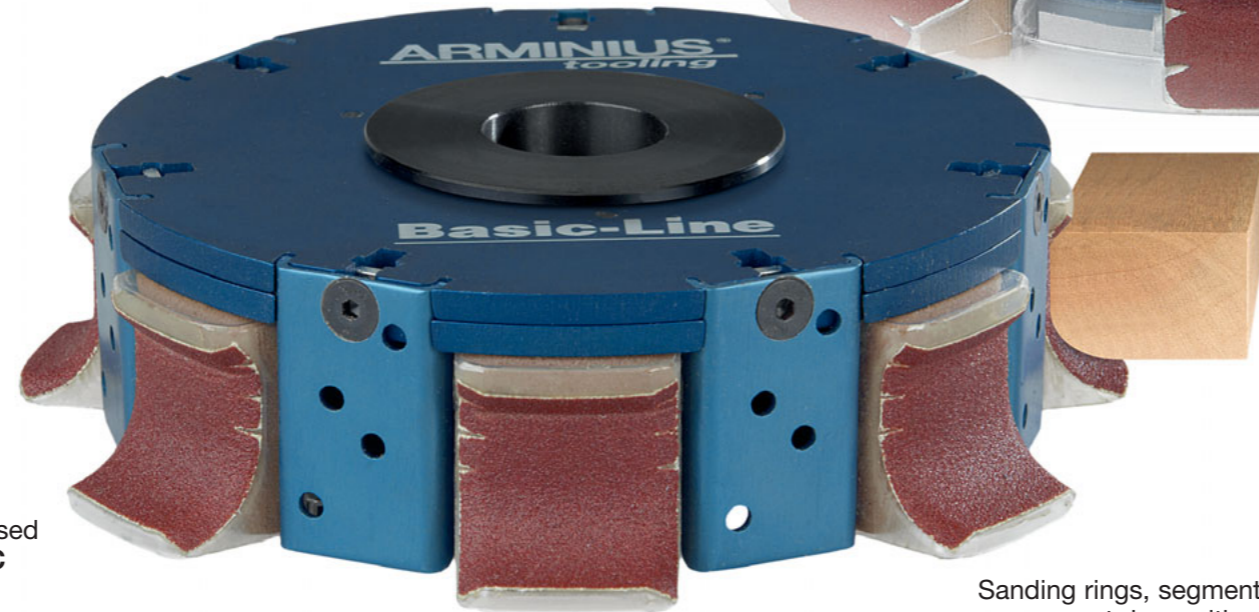
ARMINIUS BASIC-Line profile sanding tooling system

Professional profile sanding systems available at a price to suit the cabinet shop budget.

In a variable design for use as a cost-efficient tool for table top-, CNC-, throughfeed machines and automatic moulders in cabinet shops and - with relevant equipment - for industrial operations.



Sanding rings for raised panels on the **BASIC** platform



Sanding rings for edges with downhold plate

3 x 3 qualities for 3 x 3 cost and performance requirements:

For fitting with individual segments capable of working with three different basic systems:

- B1:** with fully profiled basic profile rubber
- B2:** with Unibase basic profile rubber
- B3:** without basic profile rubber

For fitting with 3 abrasive qualities:

- A1:** Opticover
- A2:** Softblend
- A3:** Easyblend



Sanding rings, segments or segment rings with **S2 universal flank protection**.

Permits substantially higher footage, i.e. lower abrasive consumption with a level surface finish over long sanding distances.

B1

B2

B3



Your benefits:

- An all in one base disk can be used for the edges, panels and custom mouldings to suit your needs
- A 3-step modular system allows new-comers to enter into this technology at an attractive price point
- Almost all of the current standard and custom profiled abrasives can be used on the basic design
- A viable option for low volume production, perfect for kitchen at a time application
- Economical profile shaping and sanding of batch sizes as low as one
- Internationally available with on line ordering, with commitment to your tooling supplier for a package deal
- Basic-Line kicks at an open door

